

Squaring The Rule On Your Rotatrim

Instructions

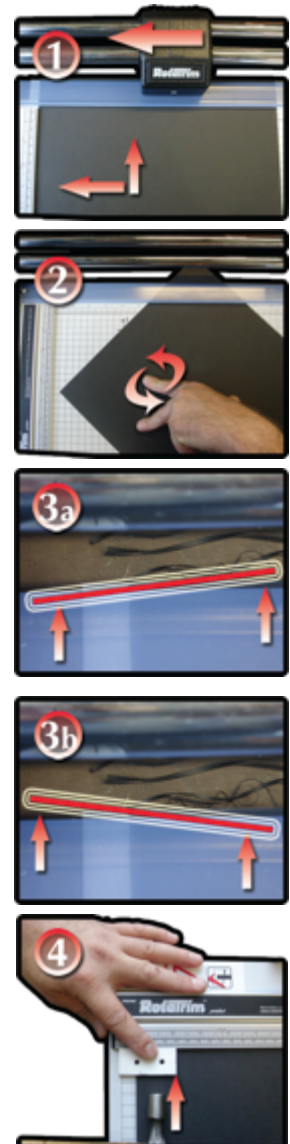
The squaring of the rule is a simple process to complete and will require the following tools for completion: -

- 1) A small hammer
- 2) A Piece of plastic or rubber material to act as a BLOCK.
- 3) A piece of A4 or similar paper or card.
- 4) A Phillips Crosshead screwdriver (only required when greater adjustments is required).

Place the trimmer on a solid platform such as a desk or work bench, where there is a good light source.

N.B. Please note the Rotary Blade is very sharp and care should be taken when performing this procedure.

1. Take a piece of paper or card and place the material against the rule of the trimmer. Offer up the material to the cutting edge, while keeping the material tight against the rule. Cut the material with the cutting head from right to left, as shown in **Illustration 1** of this document.
2. Rotate the material anti-clockwise by 90°, which will then line up the edge of the material that has just been cut against the rule. Repeat the cut as in step 1 and repeat and repeat, such that you have made 4 cuts in total. This will have the effect of quadrupling any inaccuracies in the rule angle.
3. With the material placed against the rule, move the material to the cutting blade and any inaccuracies can be easily seen. If the rule is straight then the material will follow the line of the flatblade perfectly. If however, the material does not match the blade, then some calibration of the rule will be required. As follows: -
 - a. If the material resembles the 'exaggerated' line in **Illustration 3a** of this document, then go to **Step 4**.
 - b. If the material resembles the 'exaggerated' line in **Illustration 3b** of this document, then go to **Step 5**.
4. Take your hammer and block and gently tap the bottom inside of the rule (i.e. on the side of the rule closest to the baseboard grid) a few times as shown in **Illustration 4** of this document. Repeat Steps 1 – 3 and check the result, which should now be much closer to calibrated. Repeat the process until you are happy with the results



Rotatrim®

The world's finest rotary cutting equipment since 1966

5. Take your hammer and block and gently tap the bottom outside of the rule (i.e. on the side closest to the edge of the trimmer) a few times as shown in **Illustration 5** of this document. Repeat Steps 1 – 3 and check the result, which should now be much closer to calibrated. Repeat the process until you are happy with the results.



6. In the unlikely event that the calibration is severely out then it may be required that the screws which hold the rule in place may need to be loosened in order to make the adjustment. Where this is the case, then loosen the screw at the bottom of the trimmer slightly (i.e. the one furthest from the cutting head). Make the necessary adjustments and then re-tighten the screw before making final adjustments to the calibration.

Having completed the process as outlined above, the Rule should now be perfectly calibrated and will offer a 90° angle between the rule and the cutting edge.